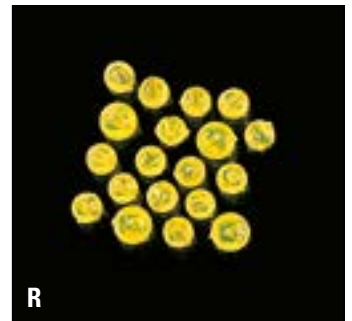
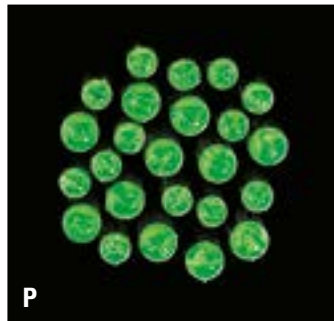


Pict.	Item-No.	Ø mm	Qty.
<b>A</b>	<b>Luminous-Beads Soft</b>		
	7857 106	6	20
<b>B</b>	<b>Luminous-Beads Soft, oval</b>		
	7857 000	10 x 6	20
<b>C</b>	<b>Luminous-Beads Round</b>		
	7854 006	6	20
	7854 008	8	15
<b>D</b>	<b>Luminous-Beads Round</b>		
	7854 010	10	15
	7854 014	14	12
	7854 016	16	8
<b>E</b>	<b>Leader-Beads special reflecting</b>		
	7858 006	3,5 + 4,0	20
<b>F</b>	<b>Attract-Beads for Sea systems</b>		
	7859 003	3	30
	7859 008	8	15
	7859 010	10	10
<b>G</b>	<b>Soft-Beads for Sea systems, orange</b>		
	8697 008	8	15
	8697 010	10	10
<b>H</b>	<b>Float Buoys for surf-fishing or for natural bait angling</b>		
	7855 000	8 + 11	10
<b>J</b>	<b>Float-Buoys</b> Perfect for trout-fishing – also usefull as shock-absorber for sea-fishing		
	8488 023	23	10
<b>K</b>	<b>Float-Buoys for self-assembly of sea-leaders</b>		
	8095 000	20 x 9	5
	<b>Spinner-Blades with hanger</b>		
<b>L</b>	8484 003	1-3 assorted	10
<b>M</b>	8484 004	1-3 assorted	10
<b>N</b>	<b>Special-Beads Red</b>		
	8680 004	4	20
	8680 006	5	20
	8680 008	7	20
<b>O</b>	<b>Special-Beads Pink</b>		
	8681 006	5	20
	8681 008	7	20
<b>P</b>	<b>Special-Beads Green</b>		
	8682 006	5	20
	8682 008	7	20
<b>R</b>	<b>Special-Beads Yellow</b>		
	8683 006	5	20
	8683 008	7	20

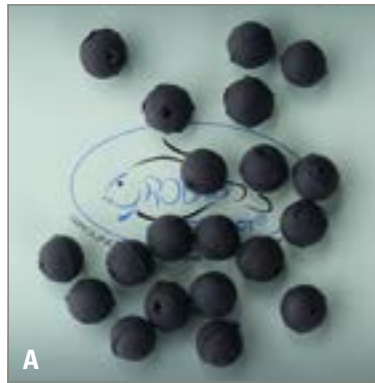
### Spinner-Blades



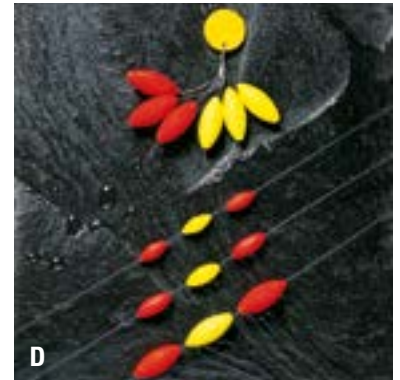
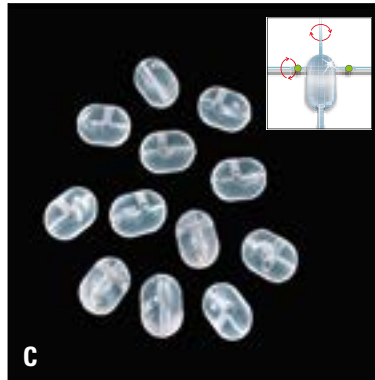
Pict.	Item-No.	Ø mm	Qty.
<b>A</b>	<b>Rubber-Beads Black</b>		
	8687 004	4	20
	8687 006	6	20
	8687 008	8	20
	8687 010	10	20

<b>B</b>	<b>Knot-Beads Oval, Black</b>		
The beads have an indentation for knots. Size: 5 – 6 mm increase			
	8689 000	5->6	10

<b>C</b>	<b>Pilk-/Cross-Beads</b>		
Special-pearls with slanted side opening for attaching sidearms. Useable for Fresh- and Saltwater.			
	8472 002	2 x 3	20
	8472 003	3 x 4	20



Pict. No.	Item-No.	Size	Size mm
<b>D</b>	<b>Floating-Beads with integrated stopper; highly visible!</b>		
	8490 000	0	5 x 10
	8490 001	1	6 x 14
	8490 002	2	7 x 16
	8490 003	3	8 x 18
	8490 004	4	9 x 20
	8490 005	5	10 x 23



### Luminous Floating Beads

These luminous oval shaped DEGA floating beads are the perfect attention-getter for Plaice, Flounder, Cod and Co.

Perfectly suitable for assembling surf-rod leaders, boat leaders, or Trout-rigs. These beads float above the bottom, out of reach from crabs etc. When the beads are luminated with a flashlight or better yet an UV-light, they develop an enormous illumination, making the bait irresistible.

Beads are pre-threaded onto a loop for easy attachment.

Available in an array of brilliant luminous-colors, shapes and sizes.

Contents: 6 ea. per SB-package.

Pict.	Item-No.	Color	Size	Ø mm
<b>A</b>	8684 001	Lum.Green	S	6 x 11
	8685 001	Lum.Green	M	10 x 21
	8686 001	Lum.Green	L	13 x 32
<b>B</b>	8684 002	Lum.Red	S	6 x 11
	8685 002	Lum.Red	M	10 x 21
	8686 002	Lum.Red	L	13 x 32
<b>C</b>	8684 003	Lum.Blue	S	6 x 11
	8685 003	Lum.Blue	M	10 x 21
	8686 003	Lum.Blue	L	13 x 32
<b>D</b>	8684 004	Lum.Purple	S	6 x 11
	8685 004	Lum.Purple	M	10 x 21
	8686 004	Lum.Purple	L	13 x 32
<b>E</b>	8684 005	Lum.White	S	6 x 11
	8685 005	Lum.White	M	10 x 21
	8686 005	Lum.White	L	13 x 32

